

# SLAM Based 3d Lidar Scanner

**PRO**  
~~**METRON**~~



**Rapid and precise  
3D scanning**

**Compact, portable,  
LiDAR-powered**

[www.metrontechlabs.com](http://www.metrontechlabs.com)



# METRON X PRO

+91-8510000659  
[www.metrontechlabs.com](http://www.metrontechlabs.com)

# 3D SLAM LIDAR

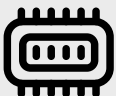


## SPECIFICATION

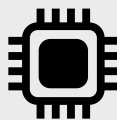


### BATTERY

IVmount- 99Wh/6875mAh



### INTERNAL MEMORY 1.8 TB



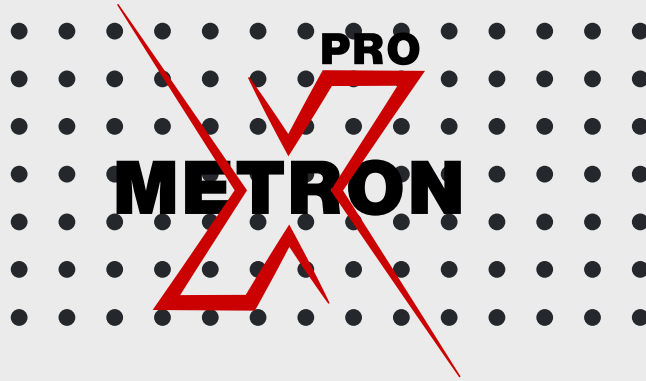
### PROCESSOR

Intel



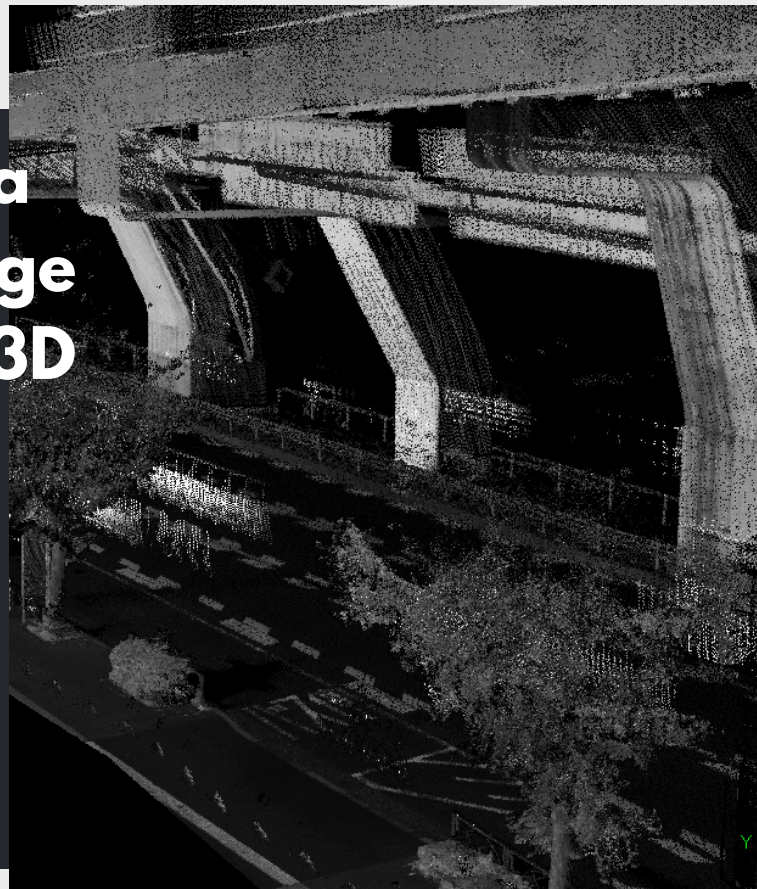
### FIELD OF VIEW

FOVHorizontal: 360°  
Vertical: ~360

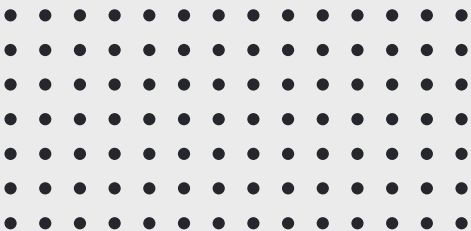


**Metron X<sup>Pro</sup> ensures a reliable 80-meter range for rapid and precise 3D scanning.**

**2,560,000 pts/sec**



**Laser Safety : Class 1 (IEC60825-1:2014)(Eye Safety)**



# WHATS IN THE BOX ?



**Data Logger**



**Sensor**



**Battery - 2**



**Bag Pack**



**Carry Case**



**Charger**

**For More Information**



+91-8510000659



[www.metrontechlabs.com](http://www.metrontechlabs.com)



A-83 Okhla -2 , New Delhi

# Specification Sheet

## IMU Performance Specifications:

### Accelerometer:

- Calibration: Fully Calibrated
- Full Range:  $\pm 10$  g
- In-Run Bias Stability: 10  $\mu$ g (x, y), 15  $\mu$ g (z)
- Noise Density: 60  $\mu$ g/ $\sqrt$ Hz
- 

### Gyroscope:

- Calibration: Fully Calibrated
- Full Range:  $\pm 2000$  deg/s
- In-Run Bias Stability: 8 deg/h
- Noise Density: 0.007  $^{\circ}$ /s/ $\sqrt$ Hz
- Strapdown Integration (SDI): Yes

Functionality: Provides continuous estimation of position, velocity, and orientation by combining IMU data.

### Magnetometer:

Integration: Onboard

Function: Assists with orientation and heading determination.

### Barometer:

Integration: Onboard

Function: Provides altitude information to complement 3D positioning.

### Note:

Specifications are subject to change. Please refer to the latest version.

## Sensor Specifications:

Scanning Method: Mechanical Rotation

Channel: 32

Instrument Range: 0.5 to 300 m (all channels)

Range Capability: 80 m @ 10% reflectivity (all channels)

Range Accuracy:  $\pm 2$  cm

Range Precision: 1 cm (standard)

FOV (Horizontal): 360 $^{\circ}$

Resolution (Horizontal): 0.09 $^{\circ}$  (5 Hz), 0.18 $^{\circ}$  (10 Hz), 0.36 $^{\circ}$  (20 Hz)

Frame Rate: 5 Hz, 10 Hz, 20 Hz

Return Modes: Single Return (First, Last, Strongest), Dual Return, Triple Return

## Mechanical/Electrical/Operational:

Wavelength: 905 nm

Laser Class: Class 1 Eye Safe

Dimensions: Height: 75.0 mm;

Top/Bottom:  $\varnothing 89.0$  /  $\varnothing 93.0$  mm

Power Consumption: 10 W

## Camera Specifications:

Resolution: 1920 x 1200 pixels

Frame Rate: Up to 51 fps

Sensor Type: CMOS

Sensor Size: 1/2.3 inches

Pixel Size: 3.0  $\mu$ m x 3.0  $\mu$ m

Data Interface: GigE

Spectral Range: 400 - 1000 nm

Shutter Type: Global shutter

Features: High sensitivity, low noise, and high dynamic range.

# PRO METRON

